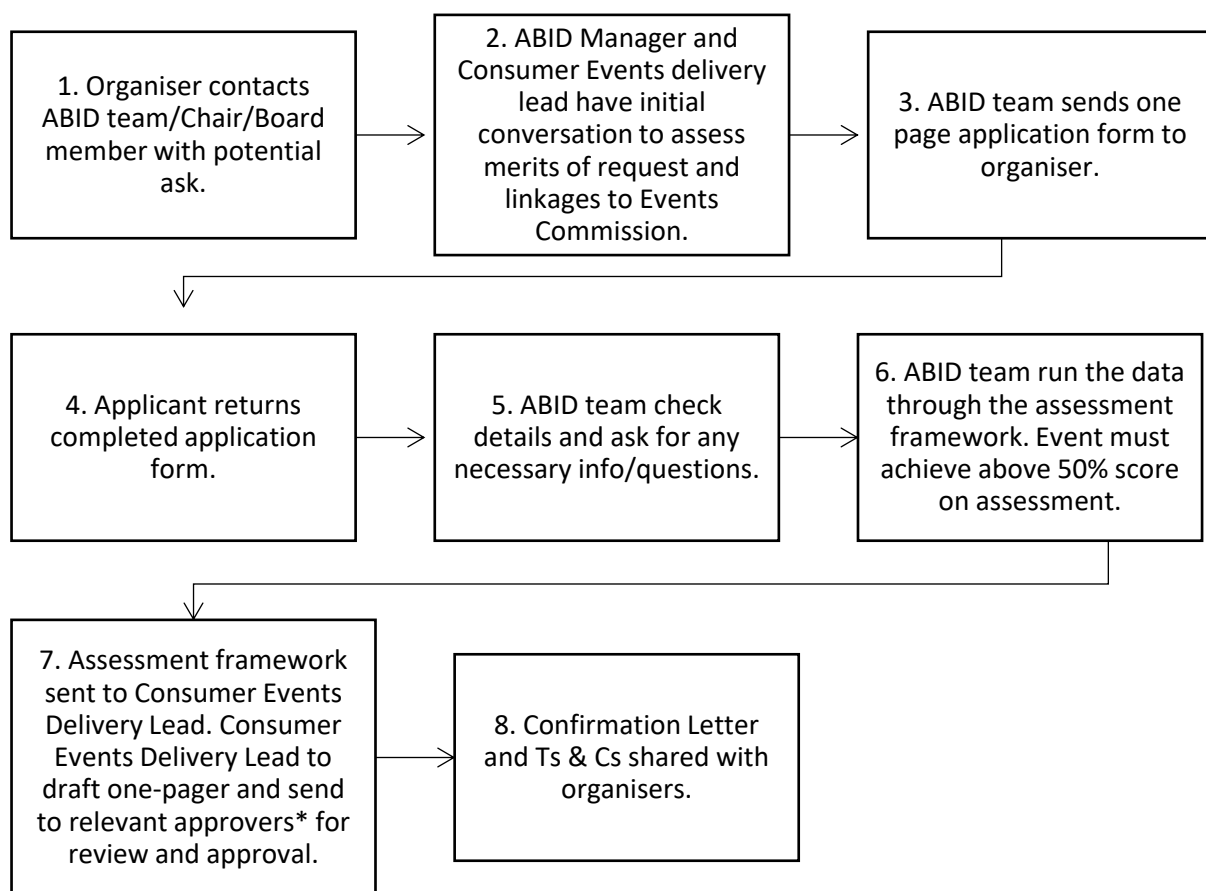


# MANCHESTER ACCOMMODATION BID

## Manchester Accommodation BID Consumer Events Funding Criteria and Application Process



\*Approval levels are as follows:

1. Up to and including £50,000: Board Chair and Consumer Events Board Lead
2. £50,000 to £100,000: Board Chair and full working group
3. Above £100,000: Full Board

### ABID Consumer Events Funding Pot Application Process

Applications will be scored against the following set of criteria, each of which may carry a different weighting to reflect their importance:

- Number of Participants/Attendees
- % of overnight stays
- Number of nights stayed p/visitor
- Month (Does the event take place during any of our need months?)
- Days (Does the event take place on any of our need nights?)
- Profile (Low/Medium/High)
- New/Existing (Brand new/Existing/One off but legacy impact/Existing but new to Manchester)

Applications must meet the following criteria:

- **Must** generate overnight stays.
- Minimum delegate cap to be considered.
- Can be domestic or international events.
- Must coincide with accommodation provider need periods e.g., January, Summer.
- Multi-year deals can only be offered subvention for the years covered by the current ABID period i.e., 2023-2028.

#### Additional comments

The assessment framework may not work for some events (especially longer stay visual art exhibitions) so each event will need to be assessed on a case by case basis.

Every ask must be able to demonstrate evidence that it meets key criteria e.g. dip days.